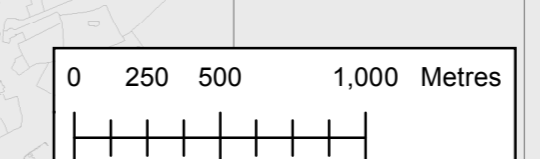


**Key**

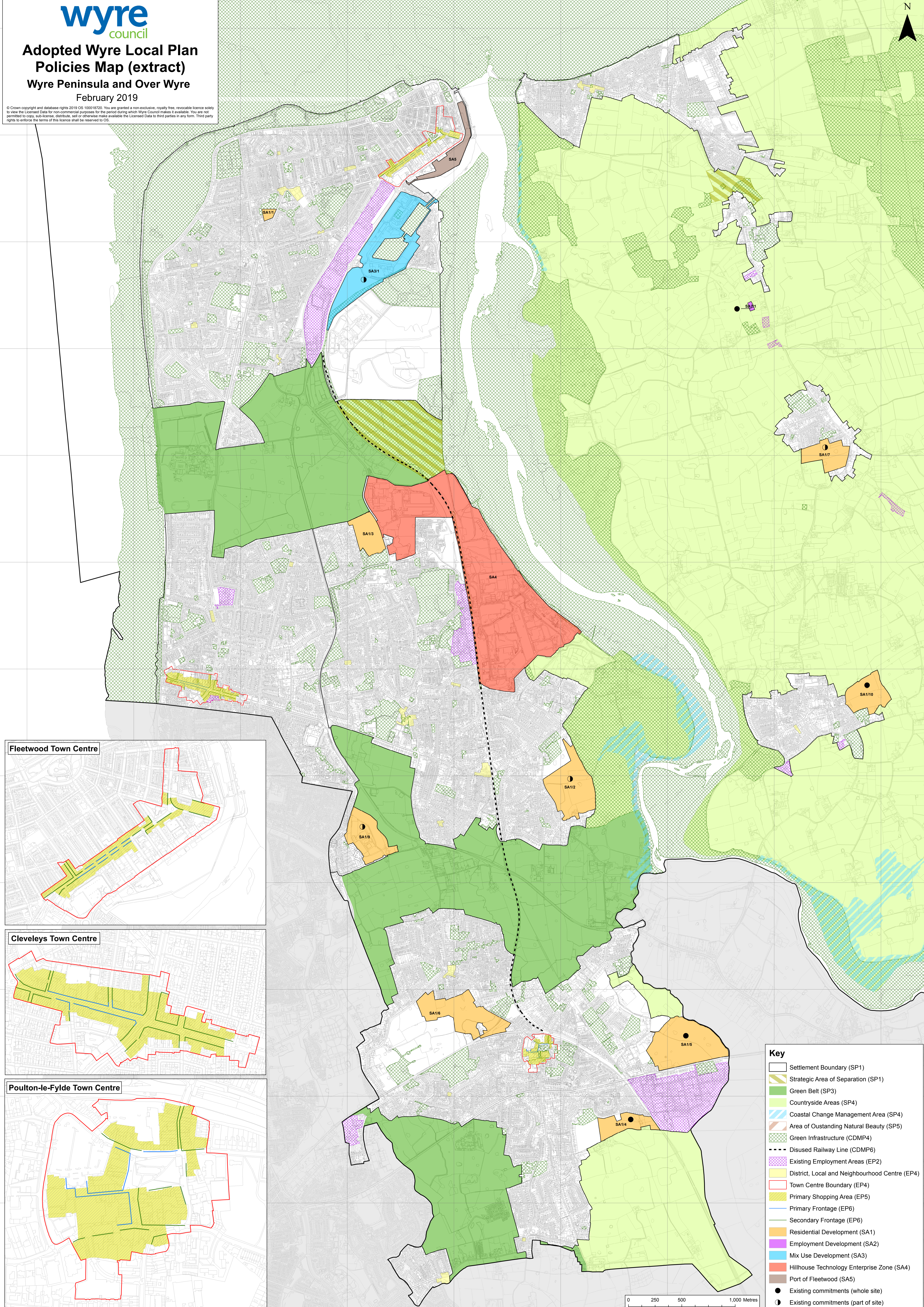
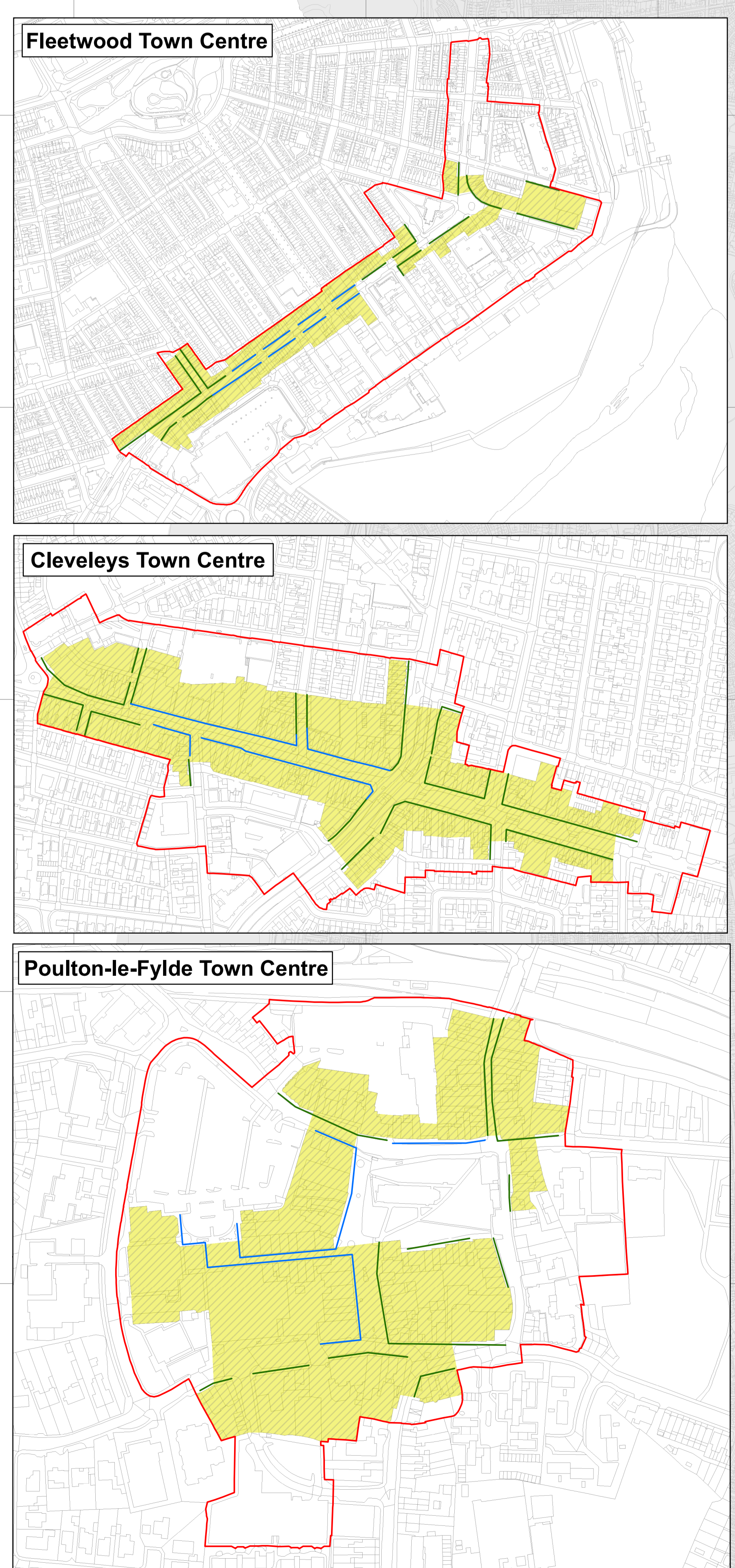
- Settlement Boundary (SP1)
- Strategic Area of Separation (SP1)
- Green Belt (SP3)
- Countryside Areas (SP4)
- Coastal Change Management Area (SP4)
- Area of Outstanding Natural Beauty (SP5)
- Green Infrastructure (CDMP4)
- Disused Railway Line (CDMP6)
- Existing Employment Areas (EP2)
- District, Local and Neighbourhood Centre (EP4)
- Town Centre Boundary (EP4)
- Primary Shopping Area (EP5)
- Primary Frontage (EP6)
- Secondary Frontage (EP6)
- Residential Development (SA1)
- Employment Development (SA2)
- Mix Use Development (SA3)
- Hillhouse Technology Enterprise Zone (SA4)
- Port of Fleetwood (SA5)
- Travelling Showpeople Site (SA6)
- Development Opportunity (SA7)
- Existing commitments (whole site)
- Existing commitments (part of site)



**Adopted Wyre Local Plan  
Policies Map (extract)**

**Wyre Peninsula and Over Wyre**  
February 2019

© Crown copyright and database rights 2019 OS 100018720. You are granted a non-exclusive, royalty free, revocable licence solely to view the Licensed Data for non-commercial purposes for the period during which Wyre Council makes it available. You are not permitted to copy, sub-license, distribute, sell or otherwise make available the Licensed Data to third parties in any form. Third party rights to enforce the terms of this licence shall be reserved to OS.



**Key**

- Settlement Boundary (SP1)
- Strategic Area of Separation (SP1)
- Green Belt (SP3)
- Countryside Areas (SP4)
- Coastal Change Management Area (SP4)
- Area of Outstanding Natural Beauty (SP5)
- Green Infrastructure (CDMP4)
- Disused Railway Line (CDMP6)
- Existing Employment Areas (EP2)
- District, Local and Neighbourhood Centre (EP4)
- Town Centre Boundary (EP4)
- Primary Shopping Area (EP5)
- Primary Frontage (EP6)
- Secondary Frontage (EP6)
- Residential Development (SA1)
- Employment Development (SA2)
- Mix Use Development (SA3)
- Hillhouse Technology Enterprise Zone (SA4)
- Port of Fleetwood (SA5)
- Existing commitments (whole site)
- Existing commitments (part of site)

